

Fig. 6. Malecite double-curve designs. Heye collection, Univ. of Pa. Museum; Geological Survey, Canada, Ottawa; Peabody Museum, Camb., Mass.

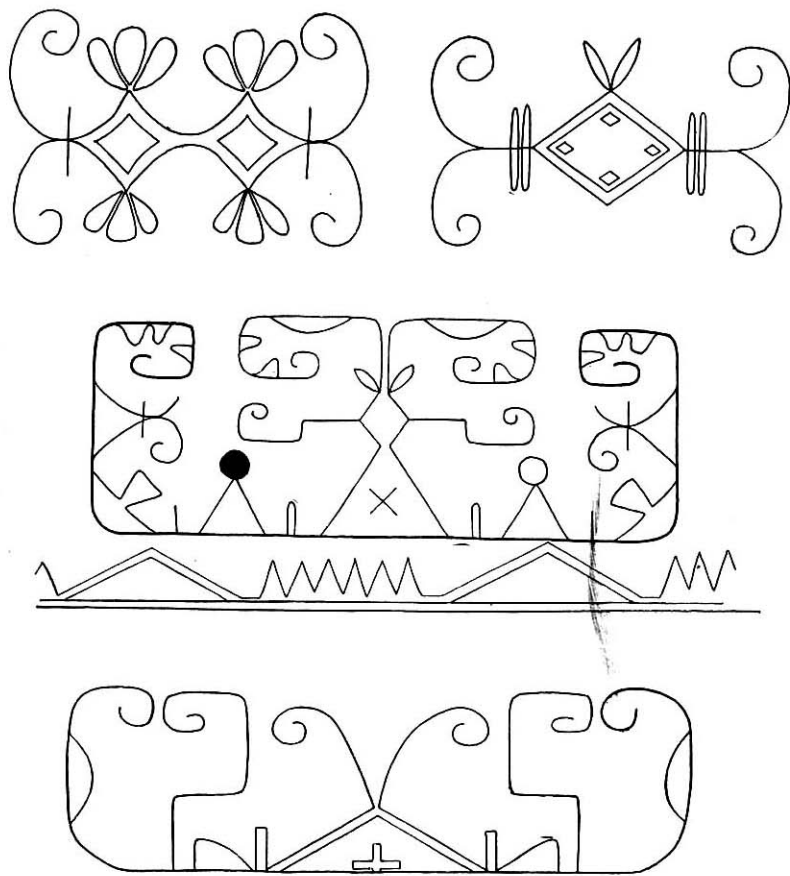


Fig. 7. Passamaquoddy double-curve designs. Heye collection, Univ. of Pa. Museum.

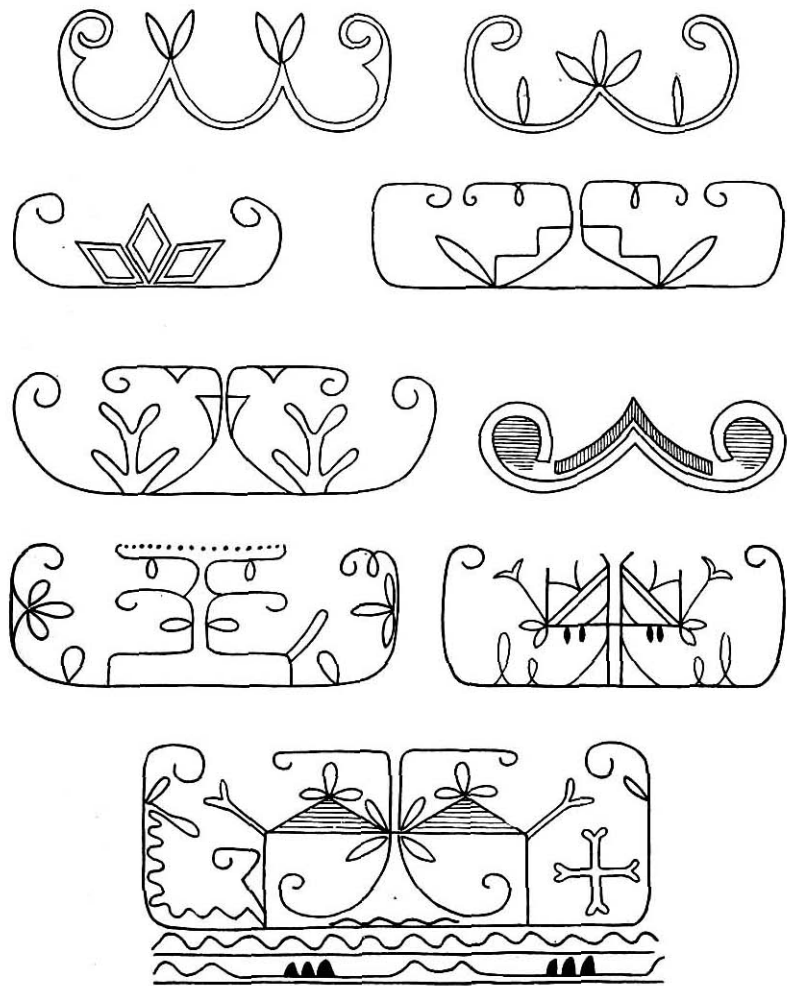


Fig. 8. Micmac double-curve designs. Heye collection, Univ. of Pa. Museum.

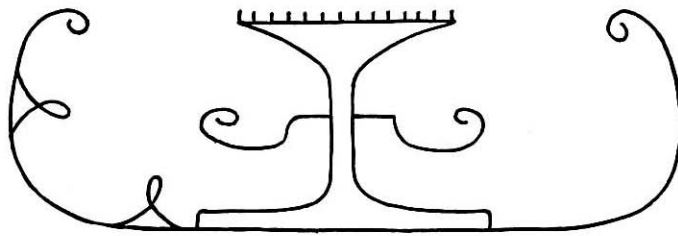
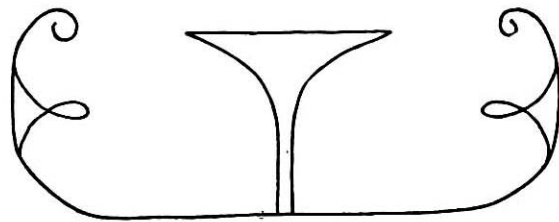


Fig. 9. Micmac double-curve designs.

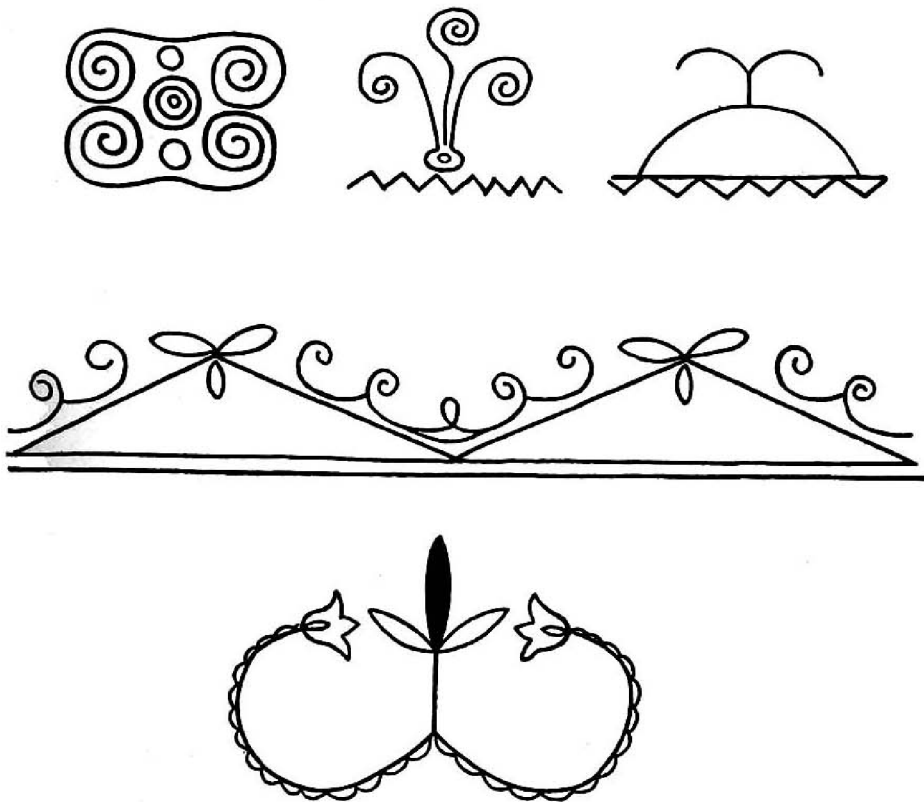


Fig. 10. Iroquois double-curve designs. State Museum, Albany, N. Y., and Heye collection, Univ. of Pa. Museum.