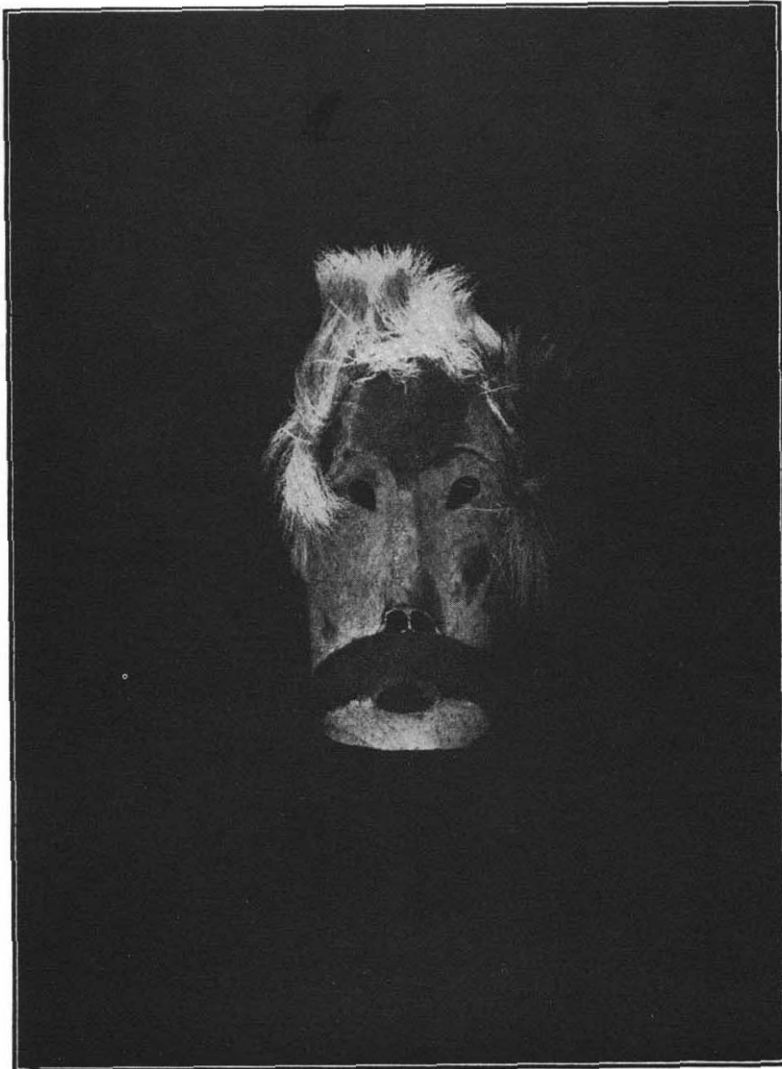


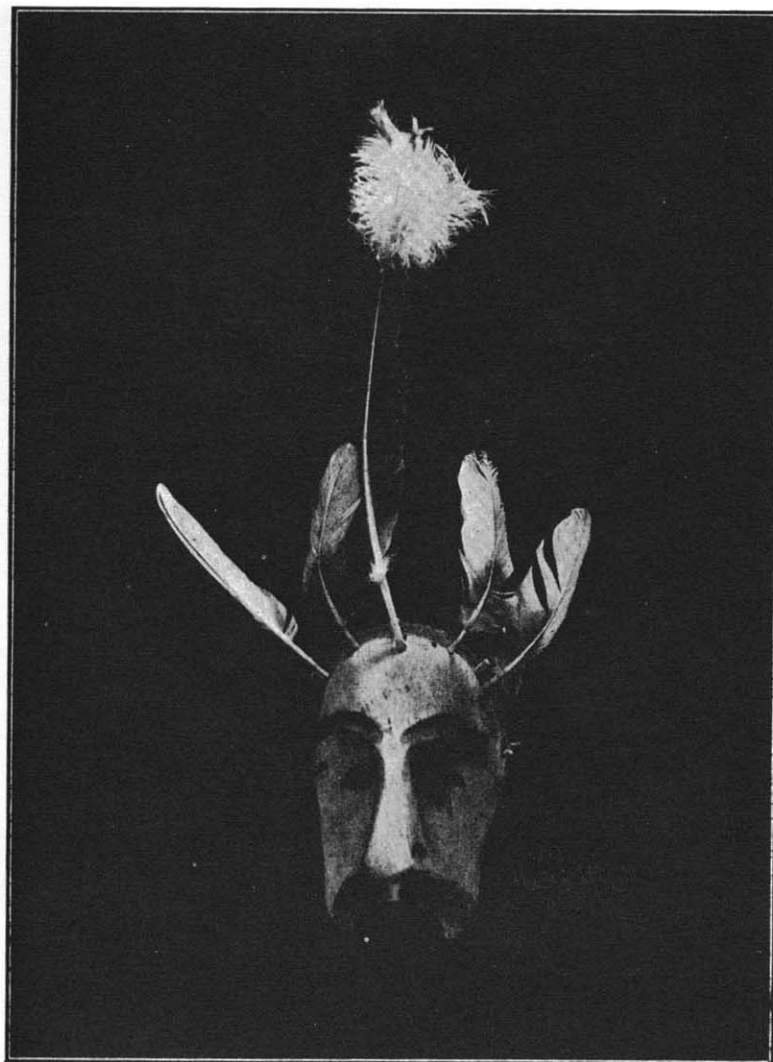
Comic mask.

Comic mask. Lower half and cheeks red. Left labret, light blue; right labret, dark blue. Moustache and beard of mink. Hair, white reindeer. Eyebrows penciled. Size, $6 \times 3\frac{1}{2}$ inches. Division of Anthropology. Museum No. IV. E, 870.



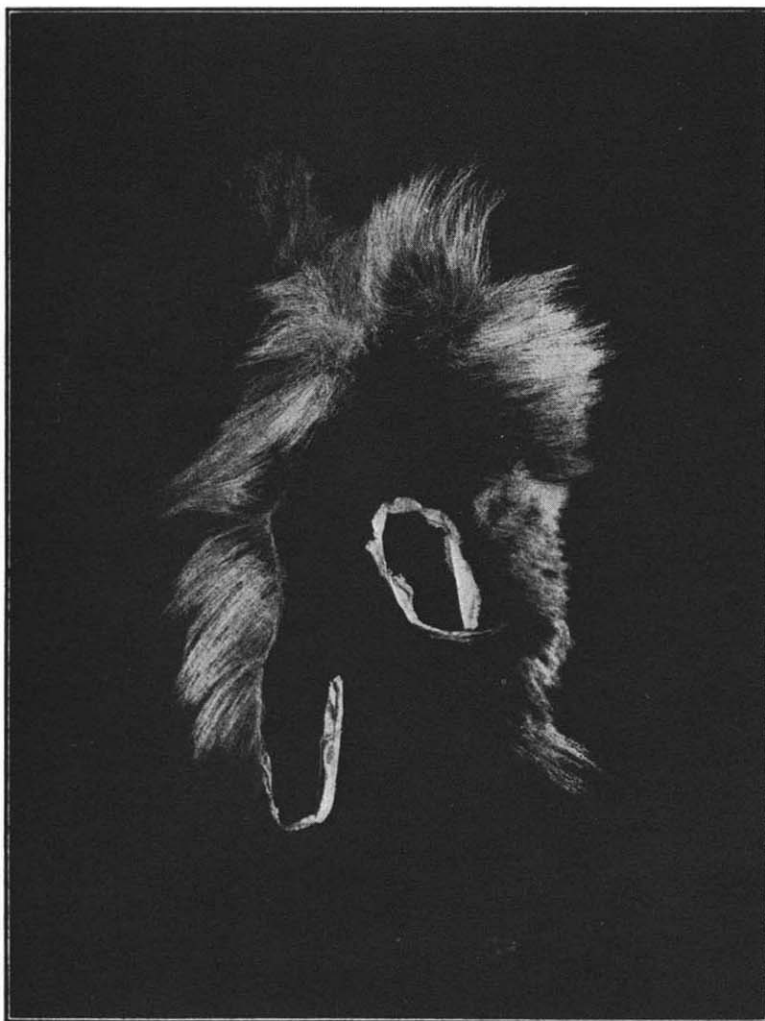
Comic mask.

Comic mask. Face green, mouth, nostrils, and eyelets red, also crown. Hair, white reindeer. Flattened nose, $3\frac{1}{2}$ inches long. Size, 6×3 inches. Division of Anthropology. Museum No. IV. E, 871.



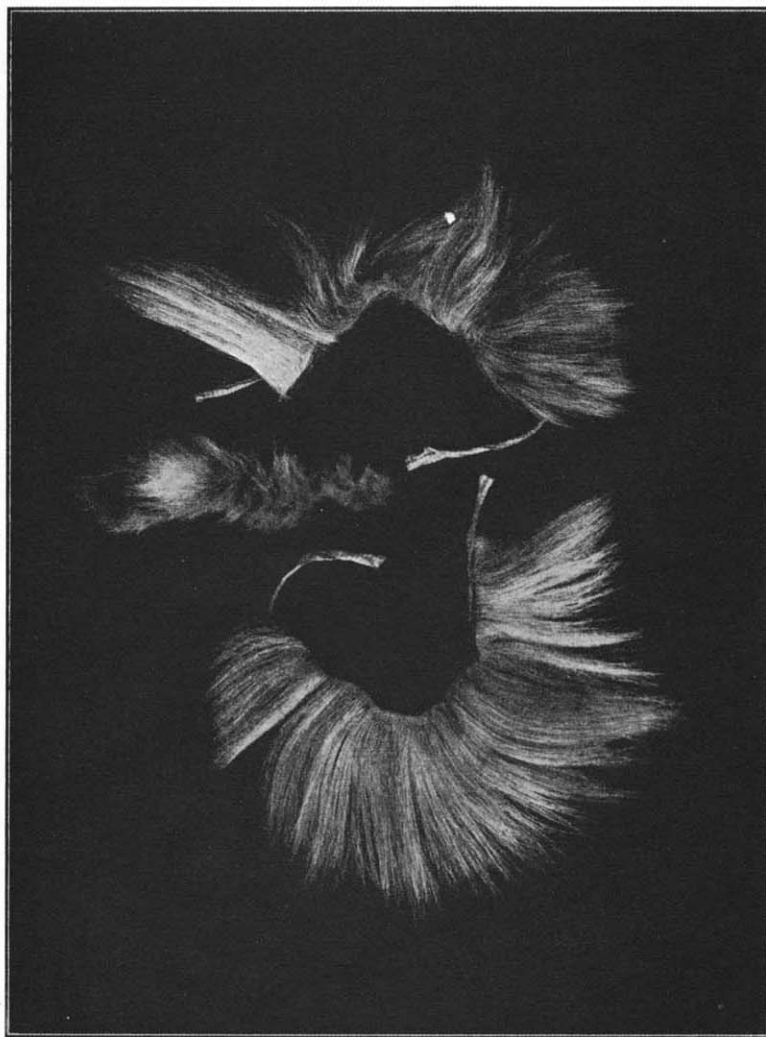
Comic mask, "Indian."

Comic mask, "Indian." Mouth, nostrils and eyelets red, also crown. Moustache and eyebrows black. Exaggerated nose, 4 inches long, $2\frac{1}{2}$ inches deep. Central feather, loon with ptarmigan tuft, 9 inches long. Border feathers, duck, 4 inches long. Size, $5 \times 3\frac{1}{2}$ inches. Division of Anthropology. Museum No. IV. E, 872.



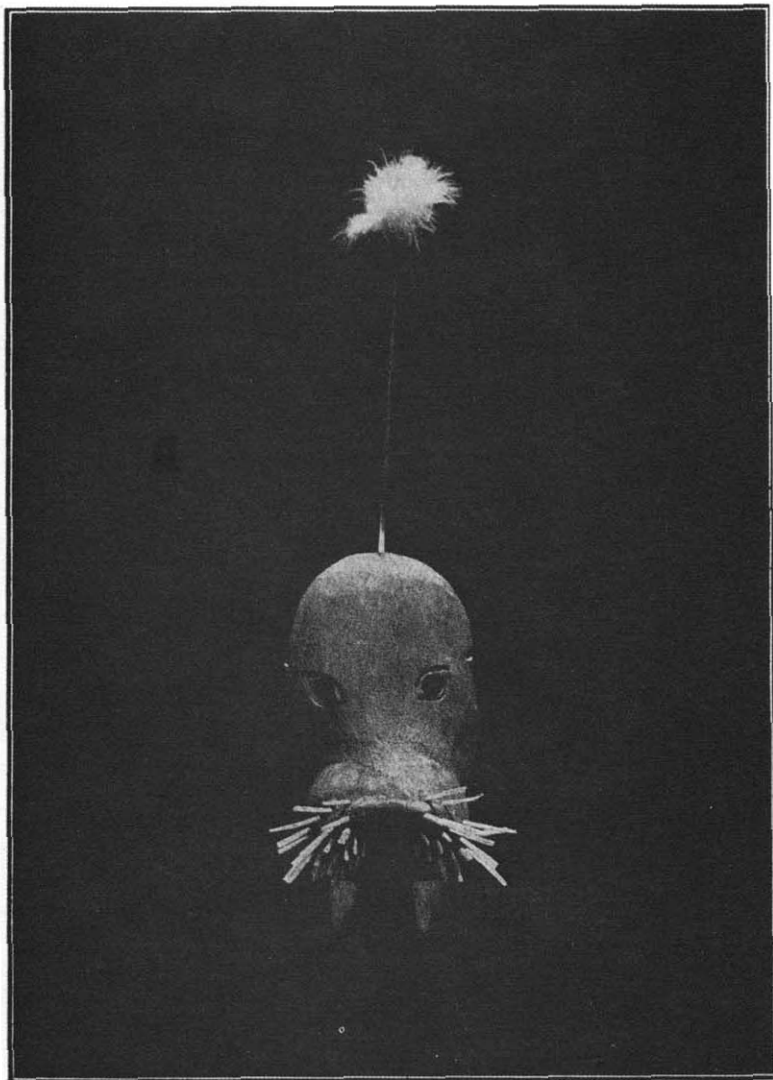
Reindeer girdle.

Reindeer girdle. Worn by woman in Reindeer and Wolf Pack dance.
Division of Anthropology. Museum No. IV. E, 873.



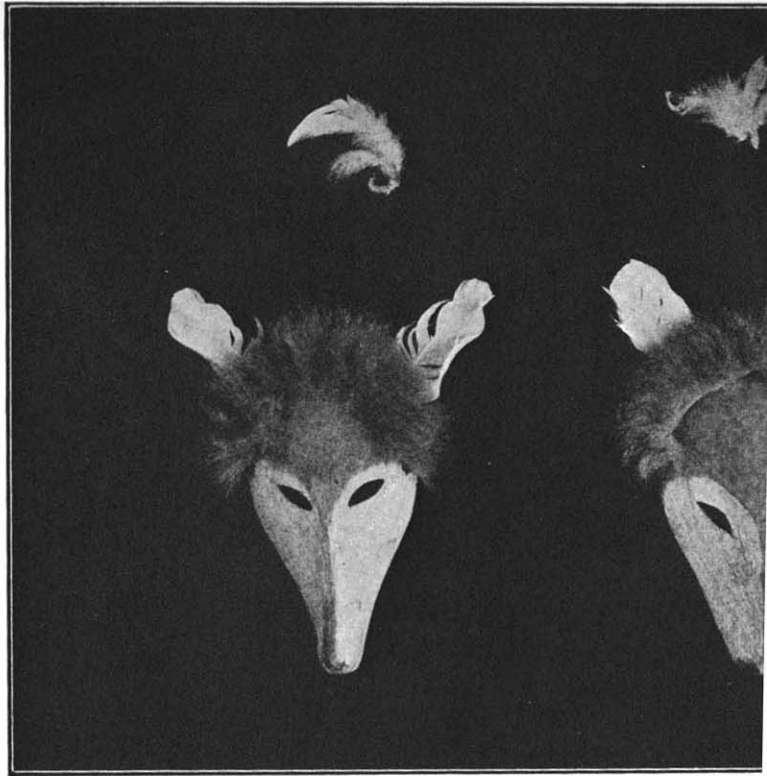
Wolf skin armlets and fillet.

Wolf skin armlets and fillet. Worn by men in Reindeer and Wolf Pack dance. Division of Anthropology. Museum Nos. IV. E, 874 a, b, c.



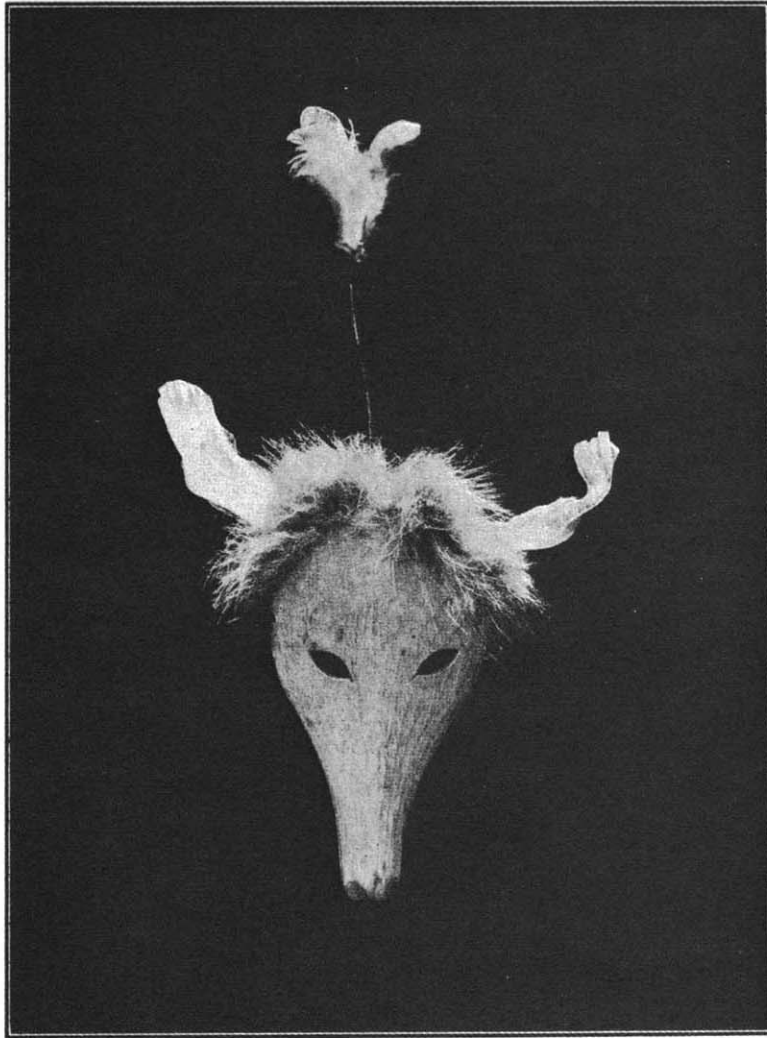
"Walrus" mask.

"Walrus" mask. Face red, muzzle black, tusks white. Hairs on muzzle represented by split quills, $\frac{1}{2}$ to an inch and a half long. Top feather stripped with ptarmigan tuft, 8 inches long. Size, 5 \times 3 inches. Division of Anthropology. Museum No. IV. E, 875.



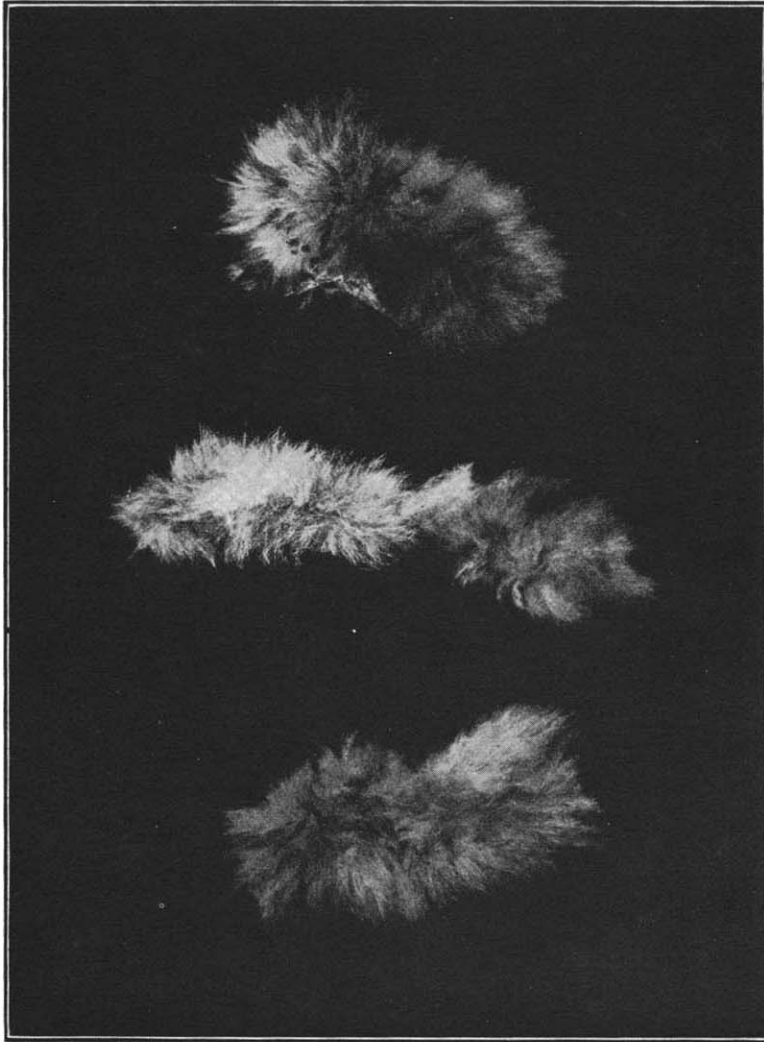
"Red Fox" masks.

"Red Fox" masks. Head red, face white, nose black. hair. Central feather, loon with ptarmigan tuft. Border feather. Left-hand mask represents male. Right-hand, female. Size, Division of Anthropology. Museum Nos. IV. E, 876, 877.



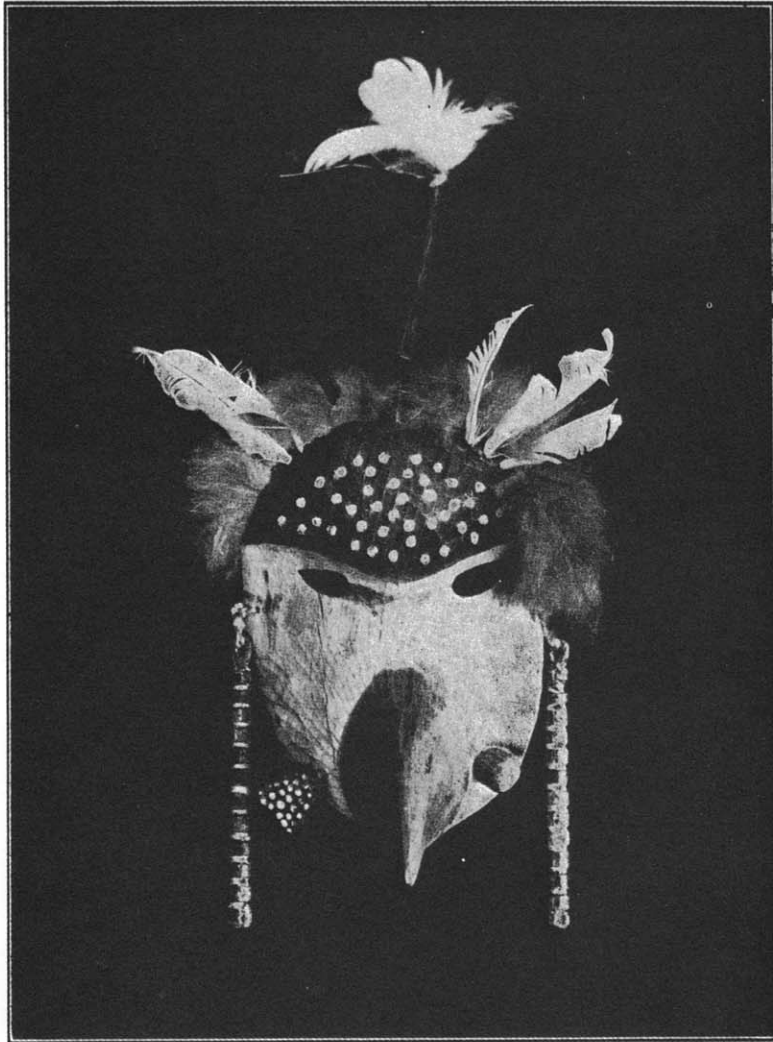
"White Fox" mask

"White Fox" mask. Head and face white, nose black. Hair, white fox fur (summer skin). Feathers same as red fox masks. Size, 6 × 3 inches. Division of Anthropology. Museum No. IV. E, 878.



Armlets and fox foot, used in "Fox" dances

Armlets and fox foot, used in "Fox" dances. A stick is inserted in the fox foot and it is used as a baton. Division of Anthropology. Museum No. IV. E, 879.



"Crow" mask.

"Crow" mask. Head and left labret black, with white spots. Face white. Right labret, green; beak black; side pieces, representing braids of hair. Alternate pairs of rings coloured red and green, purple and green, black and green. Hair, red fox fur. Feathers, ptarmigan. Central feather, crown with ptarmigan tuft. Size, 9 × 6 inches. Division of Anthropology. Museum No. IV. E, 880.



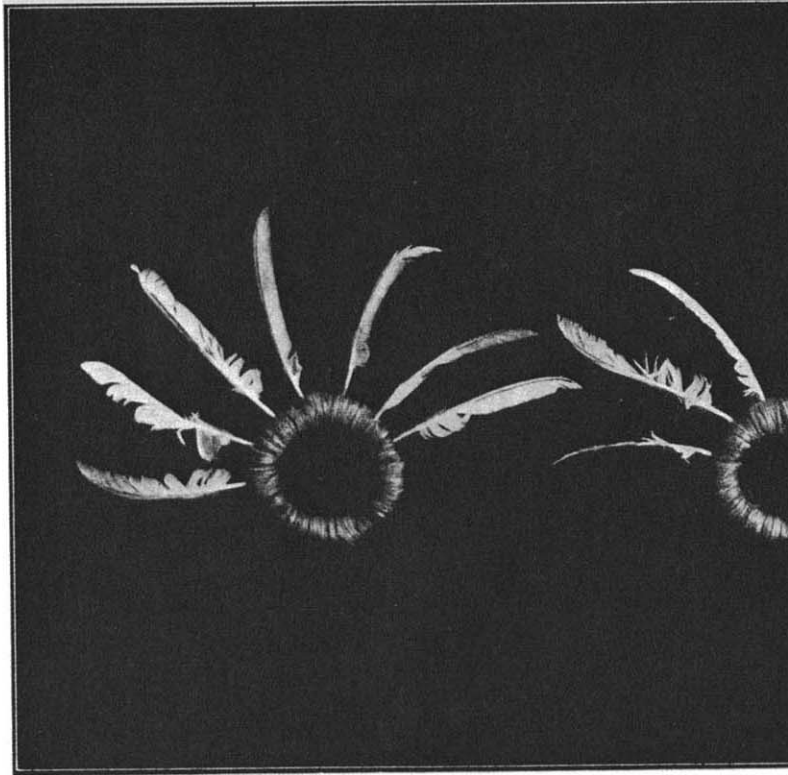
"Inva" mask.

"Inva" mask. Worn by shaman. Face white, eyebrows and chin marks black. Beard, white fox. Hair, red fox fur. Feathers, loon and ptarmigan. Features much flattened. Size, 7 × 5 inches. Division of Anthropology. Museum No. IV. E, 881.



Finger masks.

"Finger" masks, used by men dancers taking animal faces, red. Black eyes and muzzle. Feather Division of Anthropology. Museum Nos. IV. E, 882



Handlets, used by women supporting men taking ani

Handlets, used by women dancers supporting men taking
Rings wound with grass. Border feathers, loon and ptarmigan
of Anthropology. Museum Nos. IV. E, 883 a, b, c, d, e, f.